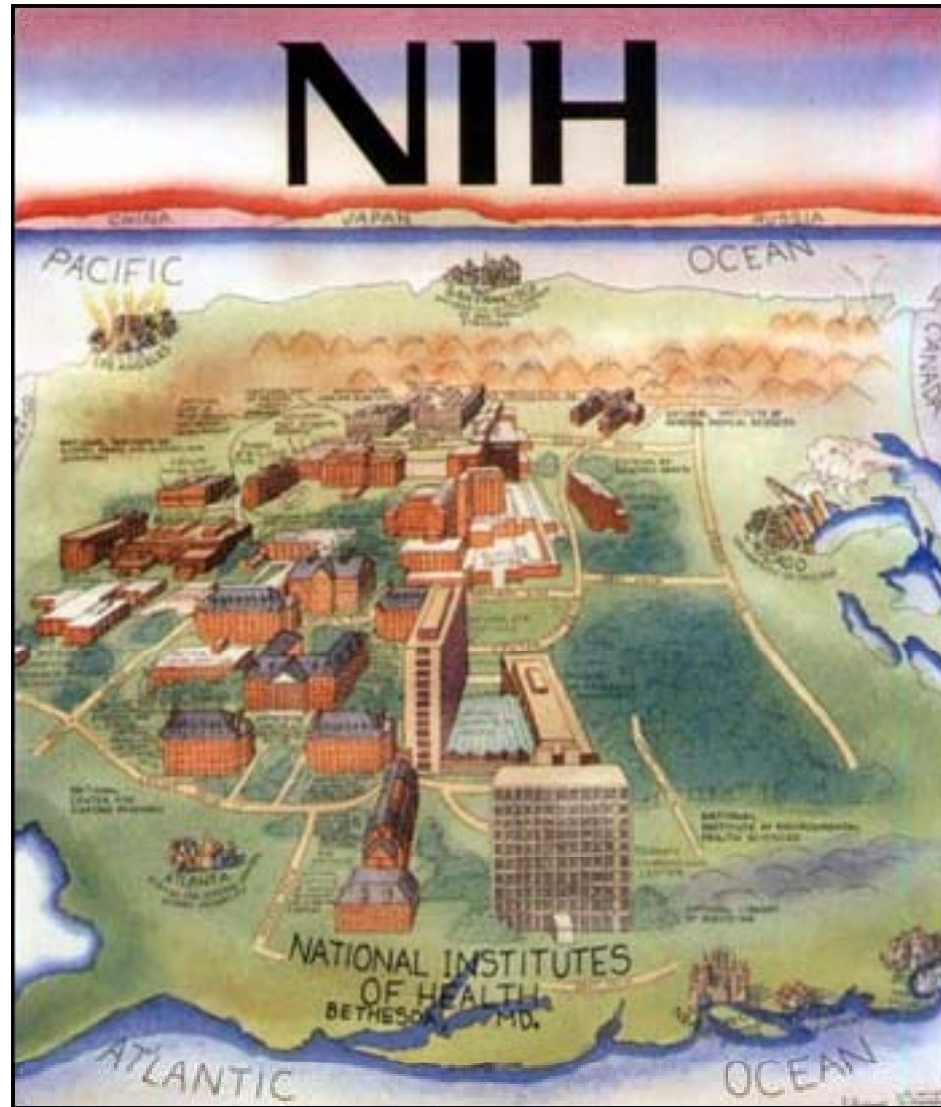




**GRANT DAY WORKSHOP
UNIVERSITY OF CENTRAL FLORIDA
ORLANDO**



Monday, October 26, 2009



Mission of NIH



- **NIH is the steward of medical and behavioral research for the Nation.**
- **Its mission is science in pursuit of:**
 - ▣ fundamental knowledge about the nature and behavior of living systems and
 - ▣ the application of that knowledge to extend healthy life and reduce the burdens of illness and disability.

Research at the NIH



□ **Intramural**

- nearly 6,000 scientists in its own laboratories, most of which are on the Bethesda Campus

□ **Extramural Research**

- 325,000 researchers at over 3,000 universities, medical schools, and other research institutions in every state and around the world.

NIH Staff



Program Staff – Program Officer (PO) - Responsible for the programmatic, scientific, and/or technical aspects of a grant.

Review Staff – Scientific Review Officer (SRO) Responsible for the scientific and technical review of applications.

Grants Management - Responsible for ensuring that all required business management actions are performed by the grantee and the federal government in a timely and appropriate manner both prior to and after award.

What Type of Research Projects is the NIH Looking for?



- Projects of High Scientific Caliber
 - ▣ Relevant to public health needs
 - ▣ Within the various Institute and Center (IC) priorities
- Investigator-Initiated Research
 - ▣ Majority of Grants submitted fall under this category
- Unique Research Projects
 - ▣ Cannot support project already funded

Who is Eligible for an NIH Grant



- Each type of NIH grant programs has its own set of eligibility requirements
- Individual Eligibility
 - ▣ Funds scientists at various stages of career
 - ▣ Citizenship requirement is dependent on the mechanism
- Institutional Eligibility
 - ▣ In general, domestic or foreign, public or private, non-profit or for-profit organizations

Grants Mechanisms

http://grants.nih.gov/grants/funding/funding_program.htm

- **NIH Research Project Grant Program (R01)**
- Used to support a discrete, specified, circumscribed research project
 - ▣ NIH's most commonly used grant program
 - ▣ No specific dollar limit unless specified in FOA*
 - ▣ Advance permission required for \$500K or more (direct costs) in any year
 - ▣ Generally awarded for 3 -5 years
 - ▣ All ICs utilize
 - ▣ See parent FOA at </grants/guide/pa-files/PA-07-070.html>

▣ *FOA funding Opportunity Announcement

NIH Research Training and Career Development Timetable

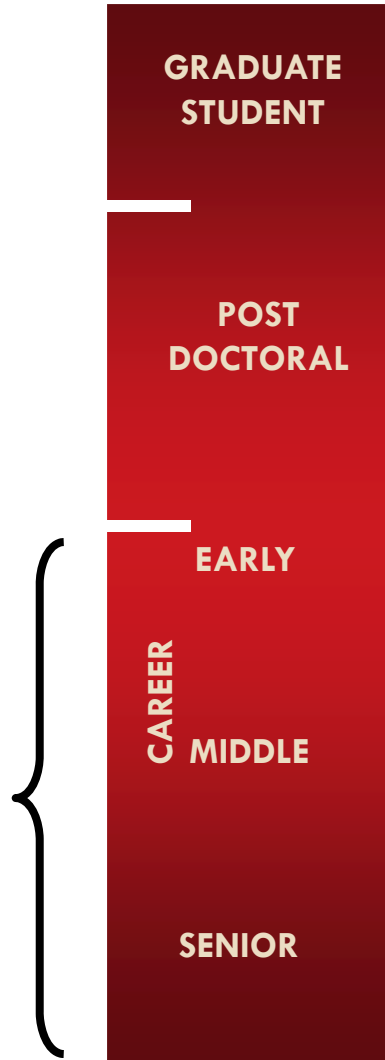
Approx. Stage of Research Training and Development

Mechanism of Support

Small Grant (R03)

Research Project Grant (R01)

Exploratory/Development Grant (R21)



← Predoctoral Institutional Training Grant (T32)

← Predoctoral Individual NRSA (F31)
 Predoctoral Individual MD/PhD NRSA (F30)

← Postdoctoral Institutional Training Grant (T32)

← Postdoctoral Individual NRSA (F32)

← NIH Pathway to Independence (PI) Award (K99/R00)
 Mentored Research Scientist Development Award (K01)

← Mentored Clinical Scientist Development Award (K08)
 Mentored Patient-Oriented RCDA (K23)
 Mentored Quantitative RCDA (K25)

← Independent Scientist Award (K02)

← Midcareer Investigator Award in Patient-Oriented Research (K24)

← Senior Scientist Award (K05)

http://grants.nih.gov/grants/funding/funding_program.htm

Differences and Similarities Between ICs



- ICs can have overlapping research priorities
 - ▣ Look at what the specific IC is currently funding in your area to better understand their priorities
- Not all ICs support the same grant mechanisms and programs
 - ▣ Check by mechanism and IC
- Speak with a program officer at different IC's

- <http://report.nih.gov/>



NATIONAL INSTITUTES OF HEALTH

Research Portfolio Online Reporting Tool (RePORT)

REPORTS, DATA AND ANALYSES OF NIH RESEARCH ACTIVITIES

Site Map

SEARCH

GO

FREQUENTLY REQUESTED REPORTS

REPORTS

CATEGORICAL SPENDING

REPORTER

GLOSSARY

FAQs

LINKS

CONTACT US

NEWS UPDATES

New The CRISP system has been retired as of September 1, 2009 and replaced by the RePORT Expenditures and Results (RePORTER) module. [more...](#)



BIENNIAL REPORT OF THE DIRECTOR, FISCAL YEARS 2006 & 2007

The NIH Biennial Report, mandated by the NIH Reform Act of 2006, provides an assessment of the state of biomedical and behavioral research, a portrait of NIH research activities (integrated across all 27 Institutes and Centers), some key research approaches and resources used in NIH research, and a review of those NIH Centers of Excellence that have been established by statutory mandate.

More >> [1](#) [2](#) [3](#) [4](#) [5](#)

RePORT OVERVIEW



RePORT TUTORIAL



QUICK LINKS

RECOVERY ACT



BIENNIAL REPORT OF THE DIRECTOR



CATEGORICAL SPENDING



NIH Data



Strategic Plans



Budget & Spending



Success Rates



Categorical Spending



Funded Organizations



Investigators and Trainees

Funding Opportunity Announcement (FOA)



□ Parent Announcement

- Standard receipt dates – usually open for 3 years
- No set aside funds
- CSR or IC review
- No specific topic
- Competition tied to IC pay line
- May submit any topic within NIH mission
- Independent FOA for each funding mechanism

Funding Opportunity Announcement (FOA)

□ IC Specific Program Announcement (PA)

- Standard receipt dates – usually open for 3 years
- No set aside funds however high priority applications may be funded beyond the payline
- CSR or IC review
- Often broadly defined or a reminder of scientific need
- Competition tied to IC pay line

▣ Special Types

- **PAR:** A PA with special **receipt, referral and/or review** considerations, as described in the PAR announcement
- **PAS:** A PA that includes specific **set-aside funds** as described in the PAS announcement

Funding Opportunity Announcement (FOA)



- Requests for Applications (RFA)
 - Single receipt date
 - Specified funds and targeted number of awards
 - Usually IC review sometimes CSR – “special emphasis panel” convened for one time basis reviews all the grants
 - Well-defined scientific area
 - Competition depends on number of applicants and set aside dollars

How to find funding opportunities

NIH Office of Extramural Research website

<http://grants.nih.gov/grants/oer.htm>

The screenshot shows the NIH Office of Extramural Research website in Microsoft Internet Explorer. The browser's address bar displays <http://grants1.nih.gov/grants/oer.htm>. The website header includes the U.S. Department of Health & Human Services logo and the Office of Extramural Research logo. A navigation menu at the top contains links for Home, About Grants, Funding, Forms & Deadlines, Grants Policy, News & Events, About OER, and NIH Home. The main content area is divided into several sections: 'About Grants' (with links for Grants Process & Award Data, Electronic Grants, etc.), 'Funding' (with a 'Funding Opportunities' sub-section circled in red, containing a search box and a list of funding types), 'NIH-Wide Initiatives' (with links for New and Early Stage Investigators, etc.), 'Global OER Resources' (with links for Glossary & Acronyms, etc.), 'News & Events' (with 'News Flashes' and 'Hot Topics' sub-sections), 'Grants Policy', 'Forms & Deadlines', and 'About OER'. The Windows taskbar at the bottom shows the Start button, several open applications (Inbox, SDM San Fran, Microsoft PowerPoint, OER Home Page), and the system clock showing 10:53 AM on 10/23/2009.

Funding Opportunities & Notices Search Results

Active Funding Opportunities (RFAs & PAs)

Search Term(s): Lymphatic

Search within Results Below:

Search

Related Links:

- [Funding Opportunities & Notices](#)
- [Advanced Funding Ops Search](#)
- [Advanced OER Site Search](#)
- [Search Help](#)

Matching Records: 4 Sorted by: Release Date (Desc) *

Announcement Number	Related Announc.	Issuing Organization	Release Date *	Opening Date (SF424 Only) ?	Expiration Date	Activity Code(s)	Title
PAR-07-420	See Related	NHLBI	07/27/2007	08/17/2007	09/19/2009	R01	Lymphatic Biology in Health and Disease (R01)
PA-07-393	See Related	NCCAM	06/29/2007	07/02/2007	05/08/2010	R01	Biology of Manual Therapies (R01)
PA-07-165	See Related	NHLBI	12/14/2006	01/05/2007	01/08/2010	R01	Pathogenesis And Treatment Of Lymphedema And Lymphatic Diseases (R01)
PAR-06-312	See Related	NCCAM	04/03/2006	05/02/2006	09/08/2009	R21	Biology of Manual Therapies (R21)

Total Matching Records = 4

Do your homework



- Make sure:
 - ▣ Your idea is original
 - ▣ That you have adequate preliminary data required by the mechanism you will use
- Prepare an outline
 - ▣ Follow application framework

Seek Guidance



- ❑ Solicit feedback from colleagues & mentors while your idea is still in the concept phase
- ❑ Ask colleagues or your Office of Sponsored Research for copies of successful NIH grants
- ❑ Speak to someone that can assist you in understanding and completing the application materials

Refine your idea



- Generate a hypothesis
- Make sure your aims can be accomplished within time and resource constraints
- Have colleagues review early drafts

New and Early Stage Investigators

- **New Investigator:** In general, a Program Director/Principal Investigator (PD/PI) is considered a New Investigator if he/she has not previously competed successfully as PD/PI for a significant NIH independent research award.
 - For example, a PD/PI who has previously received a competing NIH R01 research grant is no longer considered a New Investigator. A complete definition of a New Investigator along with a list of NIH grants that do not disqualify a PD/PI from being considered a New Investigator can be found at
- http://grants1.nih.gov/grants/new_investigators/resources.htm.

Early Stage Investigator (ESI): An individual who is classified as a New or First-Time Investigator and is within 10 years of completing his/her terminal research degree or is within 10 years of completing medical residency (or the equivalent) is considered an Early Stage Investigator (ESI). More information on ESIs is available at

<http://grants.nih.gov/grants/guide/notice-files/NOT-OD-08-121.html>.

New Investigators

U.S. Department of Health & Human Services
www.hhs.gov

Office of Extramural Research
National Institutes of Health

Search: Go
Advanced Search | Site Map

Home About Grants **Funding** Forms & Deadlines Grants Policy News & Events About OER NIH Home

Funding Opportunities
Funding Opportunities (RFAs, PAs) & Notices
Unsolicited Applications (Parent Announcements)
Research Training & Career Development
Small Business (SBIR/STTR)
Contract Opportunities

NIH-Wide Initiatives
New and Early Stage Investigators
Multiple Principal Investigators
Genome-Wide Association Studies (GWAS)
NIH Roadmap for Medical Research
NIH Blueprint for Neuroscience Research

New and Early Stage Investigator Policies: Archives and Resources
[[Back to New and Early Stage Investigator Policies](#)]

On This Page:

- [History of Commitment to New Investigators](#)
- [Special NIH Programs For New and Emerging Investigators](#)
- [NIH Resources for Grant Applicants](#)
- [Non-NIH Resources](#)
- [Help with the Application Process](#)
- [Data on New Investigators](#)

History of Commitment to New Investigators

- [New Investigator Research Awards](#) - June 3, 1977 - (PDF - 396 KB)
- [First Independent Research Support and Transition \(FIRST\) Award](#) - August 1, 1986 - (PDF - 792 KB)
- [Report on the Workgroup on New Investigators](#) - June 4, 1997
- [Current Policies Related to New Investigators](#) - November 21, 1997
- [Transition to a New NIH Policy on New Investigators](#) - December 19, 1997
- [Pilot Study to Shorten the Review Cycle for New Investigator R01 Applications](#) - November 30, 2005
- [Clarification of Submission Dates for the Pilot Study to Shorten the Review Cycle for New Investigator R01 Applications](#) - April 13, 2006
- [Extension of NIH Pilot Study to Shorten the Review Cycle for New Investigator R01 Applications](#) - January 8, 2007
- [Continuation of the Extension of the NIH Pilot Study to Shorten the Review Cycle for New Investigator R01](#)

start | Inbox - Microsoft Out... | SDM San Fran | Microsoft PowerPoint | New and Early Stage ... | Local intranet | 10:42 AM

http://grants.nih.gov/grants/new_investigators/



Eunice Kennedy Shriver

NICHHD

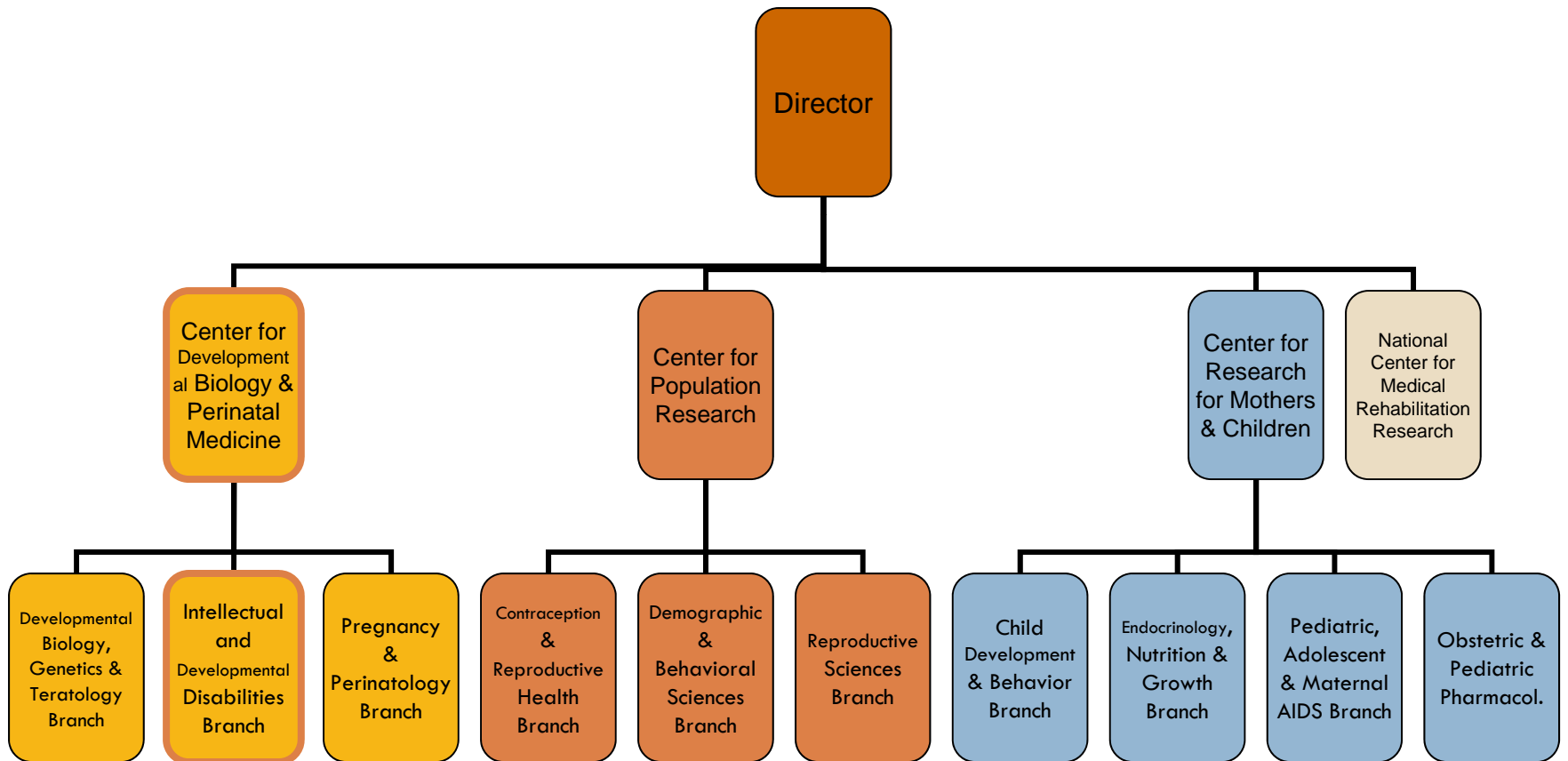
National Institute of Child Health
& Human Development

Eunice Kennedy Shriver Institute for Child Health and Human Development (NICHD)

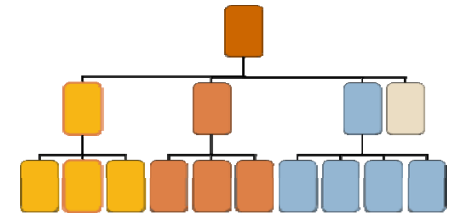
□ Mission:

- Is to ensure that every person is born healthy and wanted, that **women** suffer no harmful effects from **reproductive processes**, and that all **children** have the chance to achieve their full potential for healthy and productive lives, **free from disease or disability**, and to **ensure the health**, productivity, independence, and well-being of all people through **optimal rehabilitation**.

NICHD

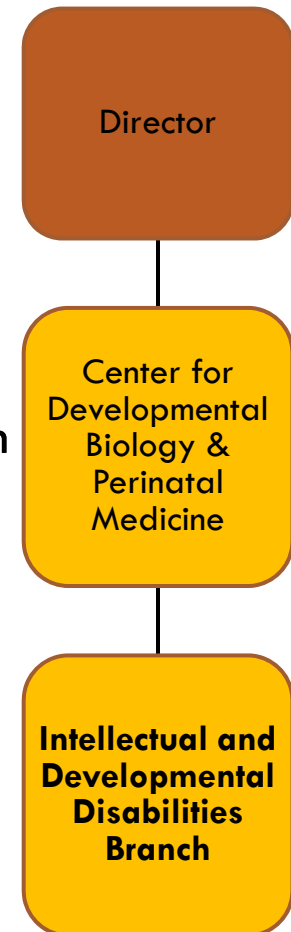


Intellectual and Developmental Disabilities Branch

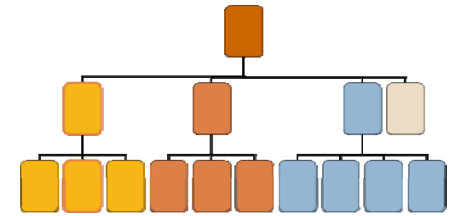


□ Mission

- Develop and support research and research training programs in IDD
- Administer a program of support for centers for research in IDD
- Coordinate with university-affiliated programs for IDD with respect to integration of research, training, and service activities
- Partner with other federal agencies, organizations, and advocacy groups to advance efforts toward the prevention, diagnosis, treatment, and management of IDD that will improve the quality-of-life for these individuals and their families



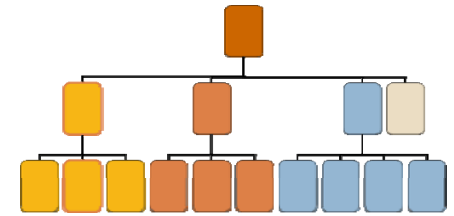
Intellectual and Developmental Disabilities Branch



- Behavioral, biobehavioral, and social science research
- Biochemical and metabolic research
- Biomedical and genetic/genomic research
- Prenatal diagnosis, newborn screening, and population screening and diagnosis
- Supported Networks, Programs, and Initiatives



Intellectual and Developmental Disabilities Branch



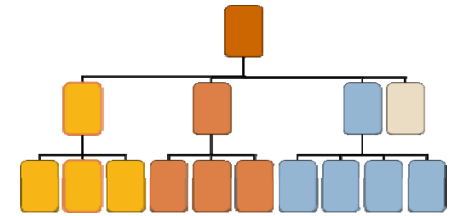
- Eunice Kennedy Shriver IDD Research Centers (IDDRCs)
- Program on Fragile X syndrome (FXS) and associated disorders
- Rare Disease Cooperative Research Consortia (RDCRCs)
- Senator Paul D. Wellstone Muscular Dystrophy Cooperative Research Centers
- Chromosome abnormalities, genetic/genomic syndromes, and epigenetic disorders
- Biochemical and metabolic disorders
- Autism Spectrum Disorders (ASDs)
- Newborn screening
- Down syndrome



Staff in the Intellectual and Developmental Disabilities Branch

- Melissa Parisi, MD, PhD **Branch Chief**
- 301-496-1383 parisima@mail.nih.gov
- Alice Kau, PhD
- 301-496-1383 kaua@mail.nih.gov
- Mary Lou Oster-Granite, PhD
- 301-435-6866 mo96o@nih.gov
- Tiina Urv, PhD
- 301-402-7105 tu36j@nih.gov
- Ljubisa Vitkovic, PhD
- 301-402-1822 vitkovil@mail.nih.gov

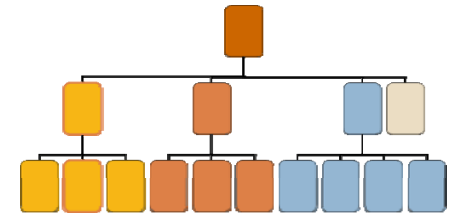
Developmental Biology, Genetics & Teratology Branch



- Basic and clinical research
 - ▣ Normal and abnormal development relative to causes and prevention of congenital structural birth defects
- Research training in relevant academic and medical areas
- High-priority research areas:
 - ▣ Biochemical, molecular, genetic, and cellular mechanisms
 - ▣ Early embryonic development
 - ▣ Organogenesis
 - ▣ Developmental neurobiology
 - ▣ Developmental genetics
 - ▣ Developmental immunology.



Pregnancy & Perinatology Branch



□ Mission

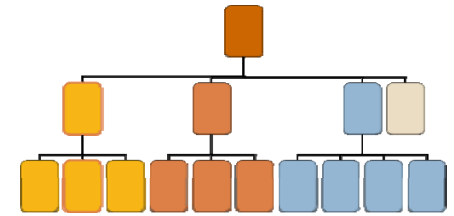
- To improve the health of mothers and children with a focus on maternal health, pregnancy, fetal well-being, labor and delivery and the developing child

□ Special interest areas:

- Obesity and Nutrition
- Preterm labor and preterm delivery
- Long-term effects of pregnancy (fetal origins of adult diseases)
- Development of non-invasive methods for evaluating fetus and placenta in utero
- Placental and fetal growth and development



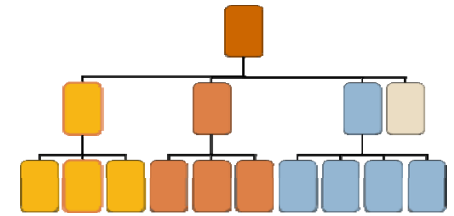
Contraception & Reproductive Health Branch



- The CRHB develops and supports research on new male and female contraceptives through grants and contracts,
 - ▣ Currently includes contracts for a 15-site Contraceptive Clinical Trials Network, a Biological Testing facility, a chemical and a peptide synthesis facility.
- Support a U54 Contraceptive Development Research Center Program with 4 sites and a U01 Male Contraceptive Development Program with 8 sites
- The CRHB also provides grant support for research in the area of pelvic floor disorders, including a 9-site Pelvic Floor Disorders Network



Demographic & Behavioral Sciences Branch



□ Mission

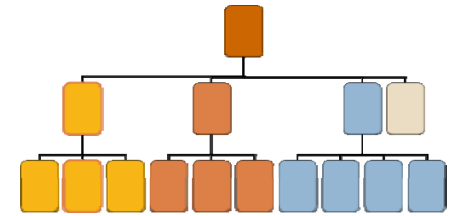
- To improve the health and well-being of individuals, families, population by adding to knowledge about human population dynamics and their causes and consequences.

□ Research supported:

- Research on population diversity and change
- Studies of the consequences of population diversity and change for health and well-being
- Research on the interrelationships among individual, family, group, community, and population processes.
 - Family, Children, and Intergenerational Research
 - Fertility, Infertility, and Reproductive Health
 - HIV and Sexually Transmitted Diseases (STDs)
 - Health, Health Disparities, and Mortality
 - Immigrants, Migration, and Population Distribution
 - Race, Ethnicity, Population Composition, and Change



Reproductive Sciences Branch



□ Mission

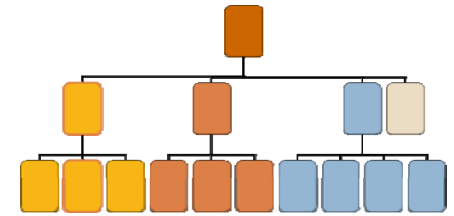
- To encourage, enable and support scientific research aimed at alleviating human infertility, uncovering new contraceptive leads and expanding fundamental knowledge of processes that underlie human reproduction

□ Research supported:

- Basic, clinical and translational studies
- Normal reproduction and reproductive pathophysiology
- Development of more effective strategies for the diagnosis, management and prevention of conditions that compromise reproductive health



Child Development & Behavior Branch

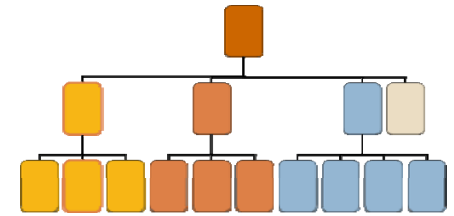


□ Mission

- To examine in-depth the behavioral, neurobiological, and genetic aspects of typical development and factors that place such development at risk
- To determine the optimal prevention and intervention approaches and conditions and contexts under which they can be most effective for specific subsets of individuals



Child Development & Behavior Branch

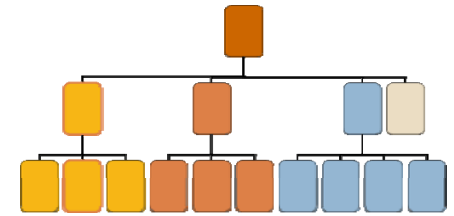


□ Programs:

- Social & Affective Development, Child Maltreatment & Violence
- Developmental Cognitive Psychology, Behavioral Neuroscience, & Psychobiology
- Pediatric Behavior & Health Promotion
- Reading, Writing & Related LD
- Language, Bilingualism & Biliteracy Dev & Disorders
- Early Learning & School Readiness
- Math & Science, Cognition & Learning



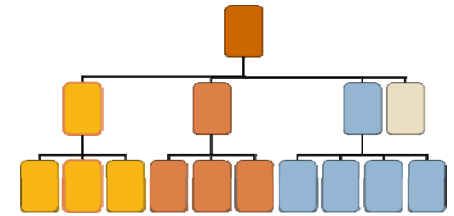
Endocrinology, Nutrition & Growth Branch



- The ENG Branch provides the NICHD with a focus for research and research training in:
 - nutritional science,
 - childhood antecedents of adult disease, developmental endocrinology, developmental neuroendocrinology,
 - and physical growth and body composition, including bone health and obesity.
- Research supported in these areas is directed toward laying the groundwork for future health.



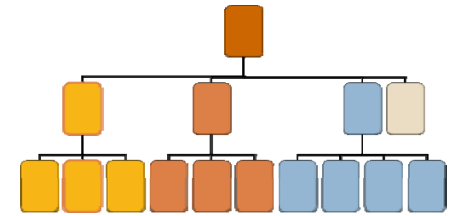
Endocrinology, Nutrition & Growth Branch



- Metabolic syndrome and type 2 diabetes
- Genetic epidemiology of obesity
- Prevention and treatment of childhood obesity
- Bone health and osteoporosis prevention
- Fetal origins of adult disease
- Disorders of growth and puberty
- Nutrition: how diet interacts with the environment to determine the health status of children and adolescents in the US and abroad.



Pediatric, Adolescent & Maternal AIDS Branch



□ Mission

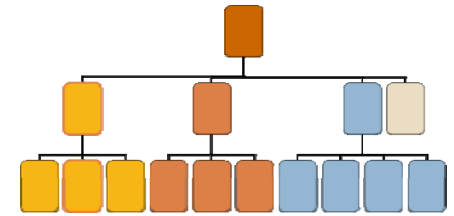
- To support and conduct domestic and international research into the epidemiology, clinical manifestations, pathogenesis, transmission, treatment, and prevention of HIV infection and its complications in infants, children, adolescents, pregnant/non-pregnant women, and the family unit as a whole.

□ Overlap with HIV research in other NICHD branches:

- Demographic and Behavioral Science Branch
- Child Development & Behavior Branch
- Endocrinology, Nutrition & Growth Branch
- Contraception and Reproductive Health Branch



Obstetric & Pediatric Pharmacology Branch



□ Mission

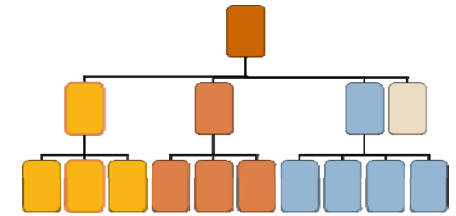
- To encourage research grant applications to conduct studies to improve existing drug safety and efficacy, and to develop new drugs for pediatric and obstetric populations.

□ Special interests:

- Pharmacological studies addressing the special differences of drug actions and responses among children at various developmental stages, between children and adults, and between pregnant and non-pregnant women
- Development of new drugs targeting children and pregnant women
- Multidisciplinary collaborations between basic and physician scientists to improve the use of therapeutics in obstetrics and pediatrics



National Center for Medical Rehabilitation Research



□ Mission

- To understand the impact of chronic physical disabilities, secondary conditions, therapeutic interventions, assistive devices, the role of environmental factors as either supports or barriers, and even health services research

□ Research supported

- Basic, clinical and translational research
- Pathophysiology, impairment, function, disability, and participation
- Biological, engineering, and psychosocial studies
- Special interest in integrated studies that may involve activity-mediated therapies, assistive devices, and psychosocial supports to enhance plasticity, promote healthy behaviors, and increase participation





Questions?